

+3.3V

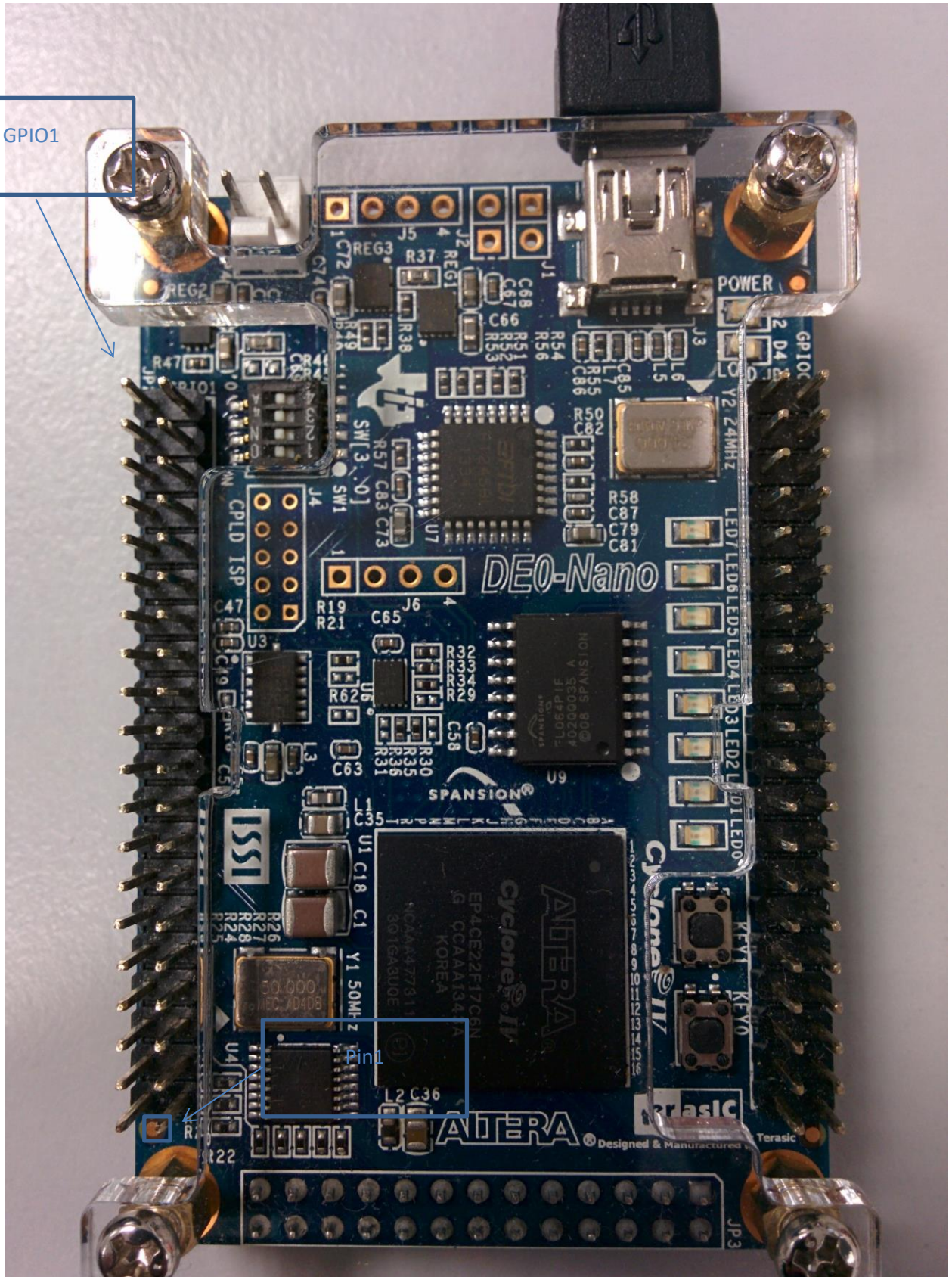
+5.0V

Gnd

Gnd



GPIO1



Learn to read the manual and find the following pins ☺

SCL -> GPIO\_1[19]

SDA -> GPIO1[21]

T0 -> GPIO1[27]

E0 -> GPIO1[25]

T1 -> GPIO1[11]

E1 -> GPIO1[9]

VCC\_SYS (5 V)

VCC3p3 (3.3V)